

Motor mower Reaper-binder 622





PAST AND PRESENT

Our success goes back to 1942

Today, **BCS** is still synonymous with mowers, thanks in particular to one machine: **the mythical 242**.

It was one of the first engine-driven mowers in the world and in the early 1940s it radically revolutionized the concept of grass-cutting which until then had been done by hand or with unwieldy horse-drawn machines.

The mowers made **BCS** great and today this company is active in various fields with different types of products, but grass-cutting continues to be an essential commitment for the company.

ONE OF THE FIRST MOWERS BUILT BY BCS, NOW EXHIBITED AT THE LEONARDO DA VINCI SCIENCE AND TECHNOLOGY MUSEUM IN MILAN.



THE NEW **622** MOWER



FROM THE ENVIRONMENT FOR THE ENVIRONMENT: AN EVER INCREASING COMMITMENT

Our commitment is based on the environment and safety. Our company staff have grown up side by side with those who live day after day in close contact with nature to which they have dedicated their life.

The respect and protection of the environment is much more than an ambition, as it has now become a constant aspect in our way of thinking and working.

The protection of all that surrounds us is also the protection of customer satisfaction.

BCS mowers could not have had the success they have enjoyed if they had not gone hand-in-hand with the brilliant intuition that made these machines versatile for other uses.

After cutting grass, the **622** was successfully used in cutting and binding crops in sheaves.

This has led to the reaper-binder which, using the gear-engine-wheels drive of the **622** combined with a reaping and binding appliance, is transformed into a machine to reap wheat, rice, sesame, lavender, medicinal herbs, reeds and everything else that has to be cut and bound.

↘ MOWER 622



The worthy heir of the first model with an engine is the **622**, a machine with a "raised deck structure", grease-lubricated reduction gear and a lateral drive unit.

Conceived to last in time, the **622** has 4 forward plus one reverse gear and is driven by an air-cooled 7.5 kW (10 hp) single-cylinder Diesel engine.

The **622** is available with differential gear (1) and independent brakes on the right on the handlebar, recommended on hilly and mountain grounds or on land where steering is often required.



BRAKES

The reduction units, placed at the ends of the deck of the machine, in a sealed case and lubricated for life, house a series of brakes (2) with independent controls on the two wheels so that the operator can manoeuvre the machine optimally on all types of grounds.

CUTTER BAR

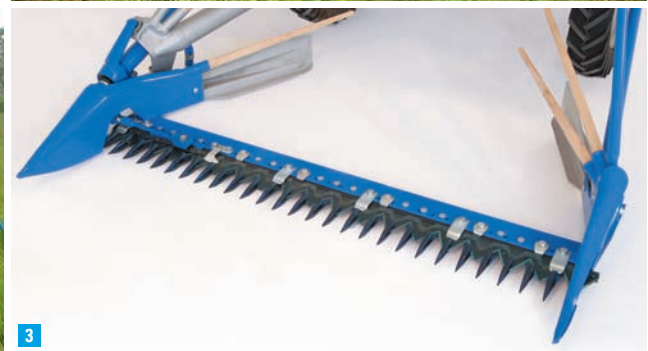
The cutter bar (3) of the **622** has been made of special materials suitable for continuous heavy duty.

Available with working widths from 127 and 140 cm, it can have low cut fingers (distance between the points 38 mm) and middle cut fingers (distance between points 51mm).

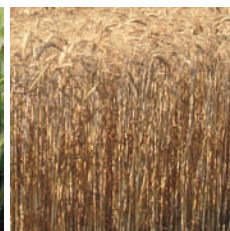
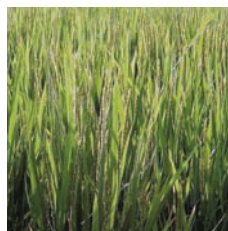
OSCILLATING HEAD AND OSCILLATING BOX

The patented oscillating head (4) together with the oscillating box (5) are the main features on which the efficiency of the **622**'s cutter bar is based.

The former, by means of a rigid drive shaft, transmits the movement to the cutting blade; the latter, placed at the end of the drive shaft, acts as a shock absorber, reducing the stress to which the cutter bar is subjected during work.



REAPER-BINDER **622**



Two versions of the reaper-binder are available. Both have the same basic features and are differentiated structurally by the height of the crop they are to be used for.

The standard **reaper binder (6)** is connected to the drive shaft unit of the **622**, like the cutter bar, without altering the structure of the machine. In this version, the height from the ground and the overall dimensions are unchanged, so that it can be used for crops with a height not exceeding 70/80 cm from the ground.

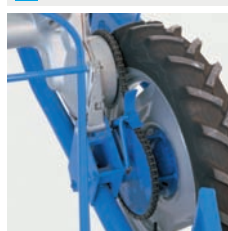
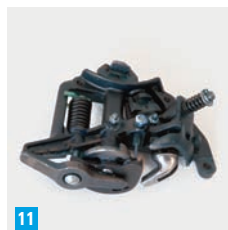
The special **reaper binder (7)** has a special chassis into which the drive shaft unit of the **622** is fitted, raising the structure of the whole machine so that crops with a height of well over 70 cm can flow under the deck. In both versions the cut crop is tied at a height of 28 cm with synthetic or natural twine.

The working width is 140 cm and the cutter bar can have three types of fingers: traditional normal **(8)** (distance between points 76 mm), traditional low cut **(9)** (distance between points 38 mm) and anti-clogging mulching **(10)** which is recommended in particular for use with reeds.



BINDER

The mechanism on which the reaper binder is based, is unquestionably the binding unit **(11)**. This is a small technical gem that regulates the binding of the cut crop and cutting the twine when the sheaf is ready. The diameter of the sheaf can be adjusted by a special spring. This BCS patent is one of the distinguishing features of these machines.



TRANSMISSION SYSTEM

The grease-lubricated drive **(12)** of the reaper binders is in an airtight aluminium housing. A special chain coordinates the movements of the various parts of the equipment by gears.

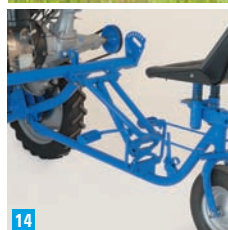
FORKS

The forks are a tool allowing the cut crop to be conveyed to the binding equipment. Their continuous and constant movement gives rhythm to the harvest.

WORK AND TRAVEL SULKY

In order to work comfortably seated, two types of single-wheel sulkies to apply to the deck of the **622** have been developed.

The normal two-tube sulkies **(13)** is recommended for cutting grass, whilst the special **(14)** or single-tube one is essential for use with the reaper binder.



MOWER REAPER-BINDER 622

TECHNICAL FEATURES

MOTOR	Lombardini 3LD450
Power Supply	Diesel
Starter	Recoil
Power CV/KW	10 / 7,5
GEARBOX	
Type	Gears in oil bath
No. of gears	4 + 1
Forward speed in km/h	I: 5,5 - II: 7,5 - III: 10 - IV: 14,2 - RM: 6
CLUTCH	Dry, mono disc with manual control
BRAKES	Independently controlled on the two wheels, they are of a special type housed in the reduction gear on the deck
STEERING SYSTEM	Differential with lock
POWER TAKE-OFF	Independent at 1125 rpm
WHEELS	4.50 - 19
SAFETY DEVICES	In compliance with EC standards
WEIGHT Tractor unit with engine without attachments kg	195
MAIN EQUIPMENT	
Cutter bar	Working width cm: 127 or 140 with traditional low cut or middle cut fingers
Standard reaper binder	Working width cm.140 – binding height cm. 28 height of crop to be harvested from 35 to 70/80 cm.
Special reaper binder	Working width cm.140 binding height cm. 28 height of crop to be harvested from 35 to 160 cm.
Work and travel sulky	Normal with two tubes for grass – Special single-tube for applications on reaper-binders
WEIGHT cutter bar kg	80
WEIGHT Standard reaper binder kg	200
WEIGHT Special Reaper binder kg	240
WEIGHT Work and travel sulky kg	45



FROM YOUR LOCAL DEALER

BCS GUARANTEES:



RICAMBI

BCS guarantees:
Tested and guaranteed original spare parts
e-parts is the on-line support for fast and easy service.



CONTROLLO

All the components of our machines are tested before going into production.
This guarantees the quality and reliability of our products.



ASSISTENZA

Efficient and valid assistance service with the support of friendly and competent technical staff **e-service** is the on-line tool supporting the service.



PROGETTAZIONE

The design criteria have the support
of very modern programs that work in 3D.



RETE VENDITA

An extensive and efficient sales force guaranteeing service and assistance



BCS S.p.A

Viale Mazzini, 161 - 20081 Abbiategrasso (Milano) - Tel. +39 02 94821 - Fax +39 02 94960800

E.mail: bcs@bcs-ferrari.it - www.bcsagri.it